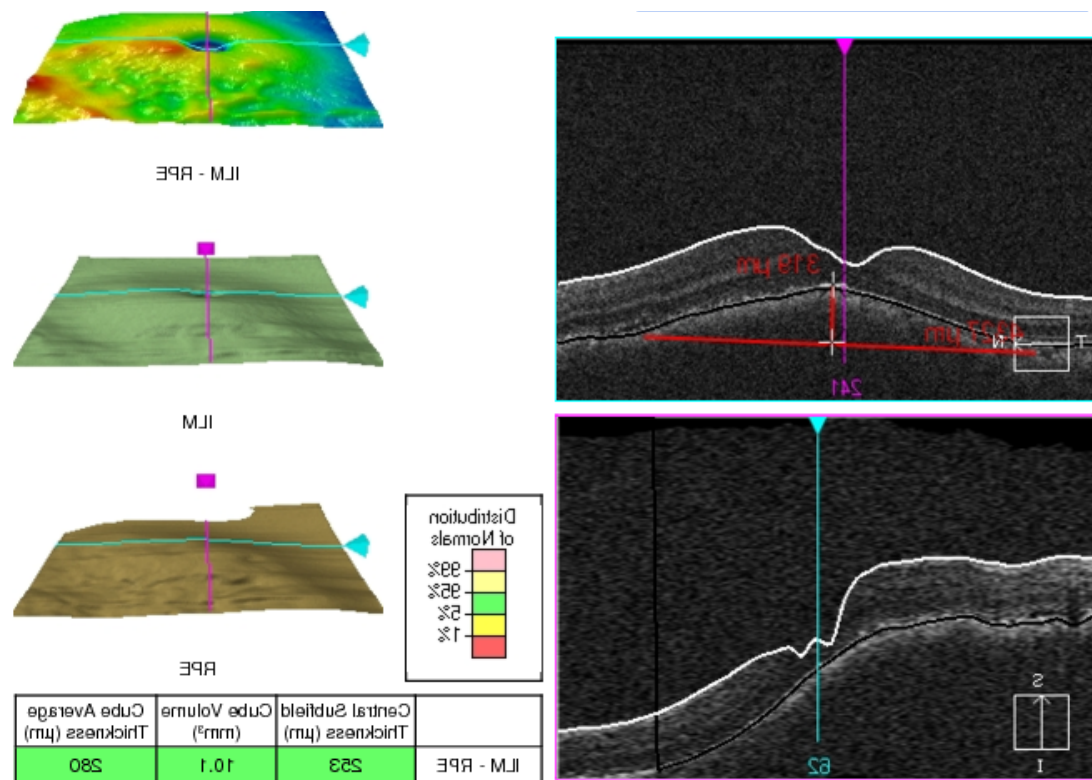


Breast Cancer secondary's in the eye.

Leopard Spot Pattern. This is not infrequently seen in metastatic disease for reasons which are not understood. It seems to be largely confined to breast cancer. It is thought that it represents spontaneous regression of a metastatic deposit though it is understood that in some cases may have been induced by earlier chemotherapy even though the eye was not known at that time to be affected.

Optical Coherence Tomography helps with the diagnosis of secondary's in the eye, because it can see through the retina like a MRI scan. Below is a lady 55 years old with known breast ca. Her optometrist cleverly noted that he felt she was becoming more hypermetropic or long sighted, which is related to the eye ball actually becoming shorter due to the secondary deposit indenting the eye, making the optical path to the retina shorter.



Treatment Options are
Laser
External beam radiation.

Ones oncologist will recommend treatment.

Mr. Nicholas Lee 2011
Lead Ophthalmic Clinician at The Hillingdon Hospital
Consultant Ophthalmologist at The Western Eye Hospital